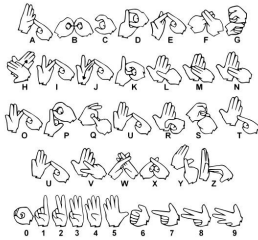


Specialists Units

Auslan

For the Auslan stage 1 learners in Grades 1 and 2, we will be adding more signs for colours, then shapes and sizes. Learning signs for 'who is in my family?' will be continuing on this term from last term



Lesley Dickens

Music / Performing Arts

This term the 1/2 unit will be taking a trip around the world in music! A large variety of songs and pieces will be played to students. Cultures covered will range from Afro Cuban music to Native American chanting songs. Students will open their ears and describe different musical genres using a developing vocabulary of music specific terminology. They will also play percussion, ukulele and use vocals as a means of engaging with each different culture and the music they have to offer.



John Koutsonikolas

Physical Education

During term two the grade 1/2 students will continue to be immersed in a challenging and rewarding physical education program that will see them using a wide variety of sporting equipment. The students will be refining the skills of bounce roll and trap previously learned in term one through game play. Term two will see the students learning and developing the Fundamental Motor Skills of punt, kick catch and dodge in a modified Football unit. Students will be involved in playing modified games of Football during their class lesson time, they will learn the skills of kicking for accuracy, handballing and marking the ball. The grade 1/2 students will begin to develop their ability to work together as a team. During the last few weeks of term two the grade 1/2 students will also be introduced to the game of Polo Hockey. The students will develop the Fundamental Motor Skills of double arm strike, run and trap.



Vanessa Shiels

Sustainability:

During term 2 the students at all year levels take a more practical, active and leading role in the organisation and management of the recycling program. In the all classrooms students are encouraged to be sustainable in their use of all their resources.

With parent support we ask that students are reminded to care for and maintain our environment during all school outdoor activities by ensuring that we reduce waste i.e. packaging / plastic wrapping etc. and placing any of their waste in the appropriate waste and recycling bins.

Developing a healthy school environment is an important part of student learning. All students are encouraged to care for our school flora and fauna in the hope that students developing a positive links and appreciation of our natural environment.

We look forward to the school's vegetable garden winter harvest, as they will be cleared of all the Summer plantings and the soil / pots will be prepared for all classrooms to plant their newly selected winter vegetables plants.

Wal Raghdoo

Visual Arts

The children will commence Term 2 in Visual Arts by creating a field of Poppies for Anzac Day with a focus on foreground and background.

The children will explore the use of colour in artwork – how colour can change –developing new colours and understanding what warm and cool colours are.

Paper skills will be developed in collages and children will be encouraged to use overlapping to further develop the concept of depth in their artwork.

The inquiry theme of 'Then and Now' will be addressed by viewing and discussing traditional and contemporary artworks.

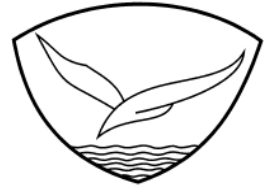


Deb Morgan

WEDNESDAY 21ST MAY 2009

Important Dates

DATE	EVENT
20/5/2009	Open Evening
22/5/2009	Inter School Sport



"Consider Others"



Visual Arts

**Curriculum Overview
Specialists**

Library

Health and Physical Education

Music and Performing Arts

Sustainability

Computers